



THE ART OF MAKING HOOKS

# FORGED LIFTING COMPONENTS for O.E.M.



Choice of the load capacities  
according to DIN 15400



Class	Driving Gear Group									Class
P			1Bm M3	1Am M4	2m M5	3m M6	4m M7	5m M8		Carbon
T		1Bm M3	1Am M4	2m M5	3m M6	4m M7				Alloy
V	1Bm M3	1Am M4	2m M5	3m M6	4m M7					Super Alloy
Hook	Load Capacities in kg									Hook
012	630	500	400	320	250	200	160	125	100	012
020	1.000	800	630	500	400	320	250	200	160	020
025	1.250	1.000	800	630	500	400	320	250	200	025
04	2.000	1.600	1.250	1.000	800	630	500	400	320	04
05	2.500	2.000	1.600	1.250	1.000	800	630	500	400	05
08	4.000	3.200	2.500	2.000	1.600	1.250	1.000	800	630	08
1	5.000	4.000	3.200	2.500	2.000	1.600	1.250	1.000	800	1
1,6	8.000	6.300	5.000	4.000	3.200	2.500	2.000	1.600	1.250	1,6
2,5	12.500	10.000	8.000	6.300	5.000	4.000	3.200	2.500	2.000	2,5
4	20.000	16.000	12.500	10.000	8.000	6.300	5.000	4.000	3.200	4
5	25.000	20.000	16.000	12.500	10.000	8.000	6.300	5.000	4.000	5
6	32.000	25.000	20.000	16.000	12.500	10.000	8.000	6.300	5.000	6
8	40.000	32.000	25.000	20.000	16.000	12.500	10.000	8.000	6.300	8
10	50.000	40.000	32.000	25.000	20.000	16.000	12.500	10.000	8.000	10
12	63.000	50.000	40.000	32.000	25.000	20.000	16.000	12.500	10.000	12
16	80.000	63.000	50.000	40.000	32.000	25.000	20.000	16.000	12.500	16
20	100.000	80.000	63.000	50.000	40.000	32.000	25.000	20.000	16.000	20
25	125.000	100.000	80.000	63.000	50.000	40.000	32.000	25.000	20.000	25
32	160.000	125.000	100.000	80.000	63.000	50.000	40.000	32.000	25.000	32
40	200.000	160.000	125.000	100.000	80.000	63.000	50.000	40.000	32.000	40
50	250.000	200.000	160.000	125.000	100.000	80.000	63.000	50.000	40.000	50
63	320.000	250.000	200.000	160.000	125.000	100.000	80.000	63.000	50.000	63
80	400.000	320.000	250.000	200.000	160.000	125.000	100.000	80.000	63.000	80
100	500.000	400.000	320.000	250.000	200.000	160.000	125.000	100.000	80.000	100
125	-	500.000	400.000	320.000	250.000	200.000	160.000	125.000	100.000	125

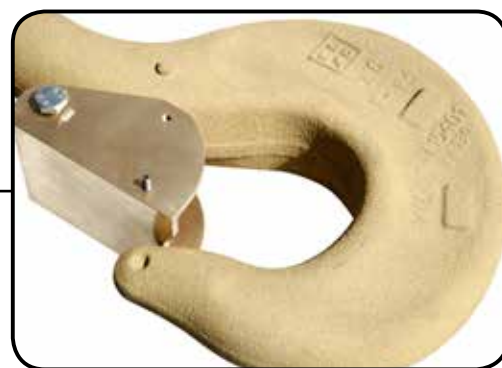
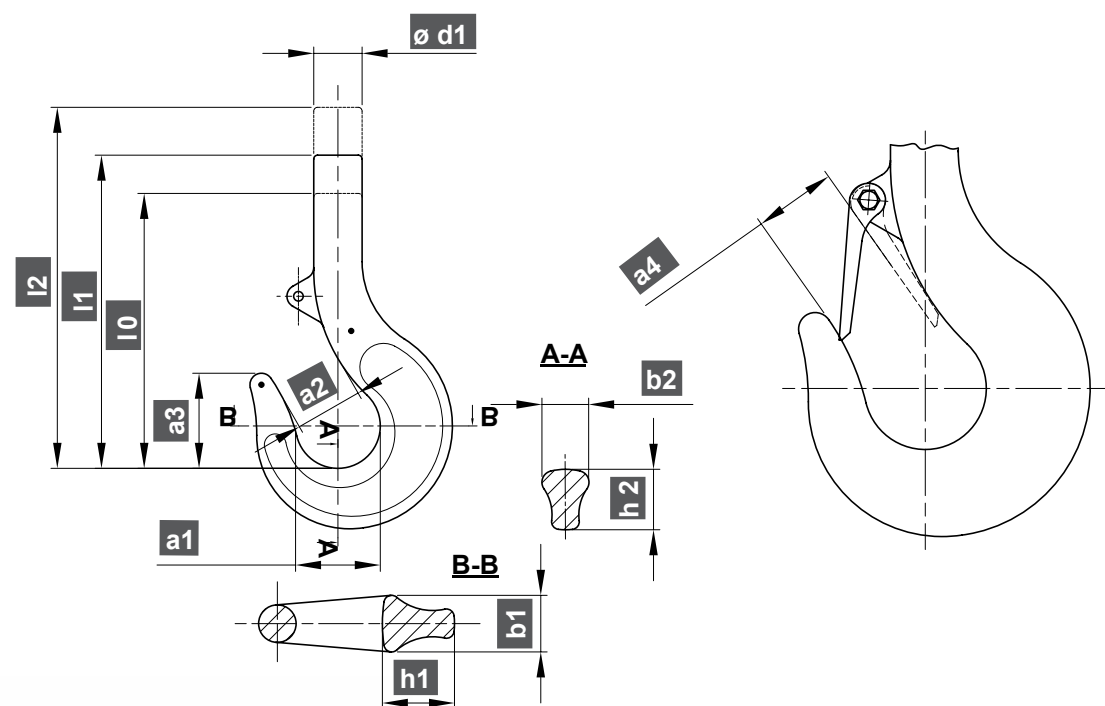
In general, group M4 has a correspondence with an average safety factor 5 for P material, and factor 4 for T - V material.

*Lifting Components  
for OEM*

Faithful compliance with the most widespread and recognized norm, the DIN 15400.



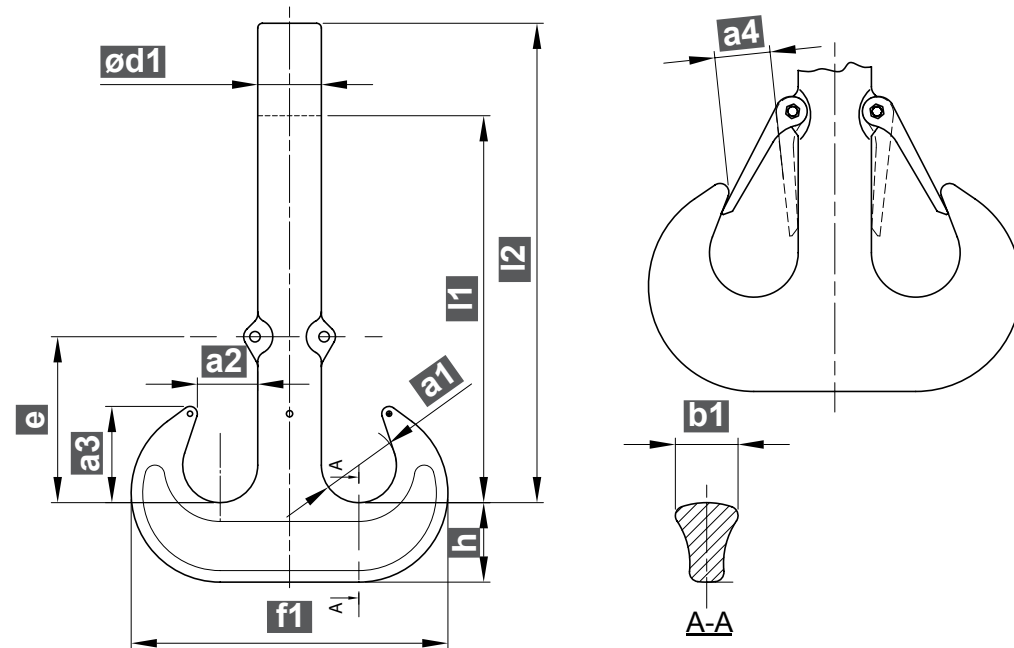
# 140 SERIES POINT HOOK



Applied norm DIN 15401 Part 1  
non destructive test 100%

Available bronze coating for no-sparking requirement and explosive areas.  
0,6 mm thickness guaranteed.

Code			Size	Dimensions												Weight kg
Class P	Class T	Class V		a1 mm	a2 mm	a3 mm	a4 mm	b1 mm	b2 mm	d1 mm	h1 mm	h2 mm	l0 mm	l1 mm	l2 mm	
139 112 PS	-	139 112 VS	012	30	24	34	20	19	15	16	22	19	108	-	-	0,45
139 125 PS	-	139 125 VS	025	36	28	41	24	22	19	20	28	24	125	-	-	0,70
139 150 PS	-	139 150 VS	05	43	34	49	30	29	24	24	37	31	152	-	-	1,50
140 000 PS	-	140 000 VS	1	50	40	57	35	38	32	30	48	40	-	197	-	3,00
140 001 PS	-	140 001 VS	1,6	56	45	64	38	45	38	36	55	48	-	224	-	4,00
140 002 PS	140 002 TS	140 002 VS	2,5	63	50	72	43	53	45	42	67	58	-	253	-	7,00
140 004 PS	140 004 TS	140 004 VS	4	71	56	80	48	63	53	48	80	67	-	285	-	10,00
140 005 PS	140 005 TS	140 005 VS	5	80	63	90	56	71	60	53	90	75	-	318	-	12,50
140 405 PS	140 405 TS	140 405 VS												-	366	15,00
140 006 PS	140 006 TS	140 006 VS	6	90	71	101	62	80	67	60	100	85	-	380 (391)	-	18,00
140 406 PS	140 406 TS	140 406 VS												-	525	23,50
140 008 PS	140 008 TS	140 008 VS	8	100	80	113	71	90	75	67	112	95	-	418 (470)	-	31,00
140 408 PS	140 408 TS	140 408 VS												-	580	37,00
140 010 PS	140 010 TS	140 010 VS	10	112	90	127	81	100	85	75	125	106	-	452	-	39,00
140 410 PS	140 410 TS	140 410 VS												-	652	50,00
140 012 PS	140 012 TS	140 012 VS	12	125	100	143	90	112	95	85	140	118	-	510 (540)	-	54,00
140 412 PS	140 412 TS	140 412 VS												-	710	69,00
140 016 PS	140 016 TS	140 016 VS	16	140	112	160	100	125	106	95	160	132	-	582	-	82,00
140 416 PS	140 416 TS	140 416 VS												-	782	93,00
140 020 PS	140 020 TS	140 020 VS	20	160	125	180	110	140	118	106	180	150	-	653	-	110
140 420 PS	140 420 TS	140 420 VS												-	853	123
140 025 PS	140 025 TS	140 025 VS	25	180	140	202	125	160	132	118	200	170	-	724	-	157
140 425 PS	140 425 TS	140 425 VS												-	924	174
140 032 PS	140 032 TS	140 032 VS	32	200	160	225	145	180	150	132	224	190	-	796	-	215
140 432 PS	140 432 TS	140 432 VS												-	996	236
140 040 PS	140 040 TS	140 040 VS	40	224	180	252	166	200	170	150	250	212	-	893	-	310
140 440 PS	140 440 TS	140 440 VS												-	1093	340
140 050 PS	140 050 TS	140 050 VS	50	250	200	285	185	224	190	170	280	236	-	990	-	430
140 450 PS	140 450 TS	140 450 VS												-	1190	470
140 063 PS	140 063 TS	140 063 VS	63	280	224	320	208	250	212	190	315	265	-	1120	-	600
140 463 PS	140 463 TS	140 463 VS												-	1320	650
140 080 PS	140 080 TS	140 080 VS	80	315	250	358	232	280	236	212	355	300	-	1270	-	860
140 480 PS	140 480 TS	140 480 VS												-	1470	920
140 098 PS	140 098 TS	140 098 VS	100	355	280	402	260	315	265	236	400	335	-	1415	-	1220
140 498 PS	140 498 TS	140 498 VS												-	1615	1290
140 099 PS	140 099 TS	140 099 VS	125	400	315	450	292	355	300	265	450	375	-	1590	-	1740
140 499 PS	140 499 TS	140 499 VS												-	1790	1830



Applied norm DIN 15402 Part 1  
non destructive test 100%

Supplied to the most well known crane manufacturers.

*Lifting Components  
for OEM*

Code			Size	Dimensions											Weight kg
Class P	Class T	Class V		a1 mm	a2 mm	a3 mm	a4 mm	b1 mm	d1 mm	e mm	f1 mm	h mm	l1 mm	l2 mm	
135 002 PS	135 002 TS	135 002 VS	2,5	50	40	65	32	40	40	112	208	50	250	-	6,60
135 402 PS	135 402 TS	135 402 VS											-	350	7,60
135 004 PS	135 004 TS	135 004 VS											280	-	9,40
135 404 PS	135 404 TS	135 404 VS	4	56	45	73	36	48	48	124	238	60		340	10,70
135 006 PS	135 006 TS	135 006 VS	6	71	56	92	45	60	60	160	301	75	375	-	18,30
135 406 PS	135 406 TS	135 406 VS											-	515	21,40
135 008 PS	135 008 TS	135 008 VS	8	80	63	103	50	67	67	182	337	85	415	-	27,00
135 408 PS	135 408 TS	135 408 VS											-	615	31,00
135 010 PS	135 010 TS	135 010 VS	10	90	71	116	56	75	75	192	377	95	450	-	38,00
135 410 PS	135 410 TS	135 410 VS												650	45,00
135 012 PS	135 012 TS	135 012 VS	12	100	80	130	68	85	85	210	421	106	510	-	52,60
135 412 PS	135 412 TS	135 412 VS											-	710	61,50
135 016 PS	135 016 TS	135 016 VS	16	112	90	146	77	95	95	237	471	118	580	-	70,00
135 416 PS	135 416 TS	135 416 VS											-	780	81,00
135 020 PS	135 020 TS	135 020 VS	20	125	100	163	85	106	106	265	531	132	650	-	98,00
135 420 PS	135 420 TS	135 420 VS											-	850	108
135 025 PS	135 025 TS	135 025 VS	25	140	112	182	95	118	118	315	598	150	715	-	134
135 425 PS	135 425 TS	135 425 VS												915	151
135 032 PS	135 032 TS	135 032 VS	32	160	125	205	106	132	132	335	672	170	790	-	184
135 432 PS	135 432 TS	135 432 VS											-	990	205
135 040 PS	135 040 TS	135 040 VS	40	180	140	230	120	150	150	375	754	190	885	-	382
135 440 PS	135 440 TS	135 440 VS											-	1085	410
135 050 PS	135 050 TS	135 050 VS	50	200	160	260	135	170	170	420	842	212	965	-	392
135 450 PS	135 450 TS	135 450 VS											-	1165	428
135 063 PS	135 063 TS	135 063 VS	63	224	180	292	155	190	190	460	944	236	1090	-	547
135 463 PS	135 463 TS	135 463 VS											-	1290	597
135 080 PS	135 080 TS	135 080 VS	80	250	200	325	170	212	212	515	1062	265	1235	-	759
135 480 PS	135 480 TS	135 480 VS											-	1435	819
135 098 PS	135 098 TS	135 098 VS	100	280	224	364	190	236	236	575	1186	300	1375	-	1060
135 498 PS	135 498 TS	135 498 VS											-	1575	1130
135 099 PS	135 099 TS	135 099 VS	125	315	250	408	215	265	265	645	1330	335	1550	-	1491
135 499 PS	135 499 TS	135 499 VS											-	1750	1581

*Lifting Components  
for OEM*





## 540 SERIES

## POINT HOOK MACHINED WITH NUT

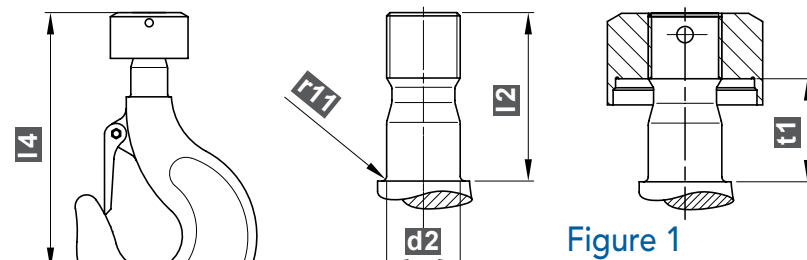


Figure 1

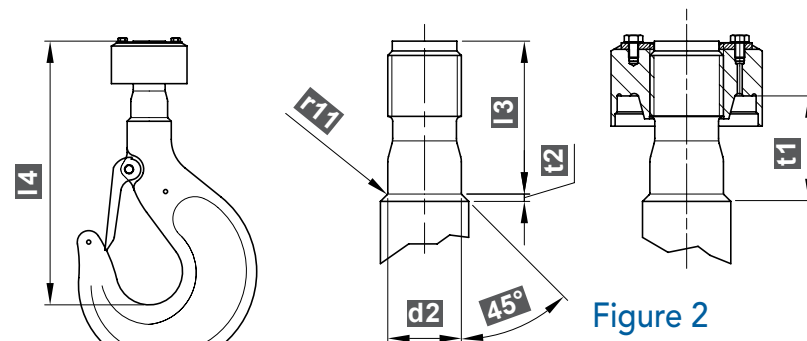


Figure 2



Applied norm DIN 15401 Part 2  
non destructive test 100%

Nut fixed with pin or safety plate.  
Special machinings on request.

Code		Figure / Size		Dimensions							Suitable bearing	
Class P	Class V	1	2	d2 mm	l2 mm	l3 mm	l4 mm	t1 mm	t2 mm	r11 mm	Class P	Class V
540 401 PS	540 401 VS	1,6	-	30	68	-	221	40	-	3	51107	81107
540 402 PS	540 402 VS	2,5	-	36	83	-	250	50	-	3	51108	81108
540 404 PS	540 404 VS	4	-	42	93	-	282	56	-	3	51110	81110
540 405 PS	540 405 VS	5	-	45	103	-	315	62	-	3	51112	81112
540 406 PS	540 406 VS	-	6	50	-	112	375	79	4	3	51214	81214
540 408 PS	540 408 VS	-	8	56	-	122	413	85	4,5	3	51216	81216
540 410 PS	540 410 VS	-	10	64	-	135	446	95,5	5,5	3	51218	81218
540 412 PS	540 412 VS	-	12	72	-	157	505	110,5	6,5	3	51220	81220
540 416 PS	540 416 VS	-	16	80	-	170	576	120,5	7	3	51222	81222
540 420 PS	540 420 VS	-	20	90	-	187	645	128	8	3	51224	81224
540 425 PS	540 425 VS	-	25	100	-	207	716	144	10	3	51226	81226
540 432 PS	540 432 VS	-	32	110	-	232	788	159	11,5	3	51232	81232
540 440 PS	540 440 VS	-	40	125	-	257	885	177,5	13,5	3	51236	81236
540 450 PS	540 450 VS	-	50	140	-	280	969	201,5	15	5	51244	81244
540 463 PS	540 463 VS	-	63	160	-	322	1100	230	15	5	51248	81248
540 480 PS	540 480 VS	-	80	180	-	357	1245	251	16	5	51256	81256
540 498 PS	540 498 VS	-	100	200	-	402	1388	283	18	5	51260	81260

Lifting Components  
for OEM



## 535 SERIES

## RAMSHORN HOOK MACHINED WITH NUT

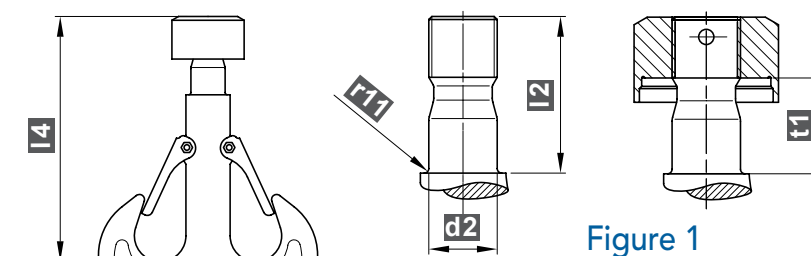


Figure 1

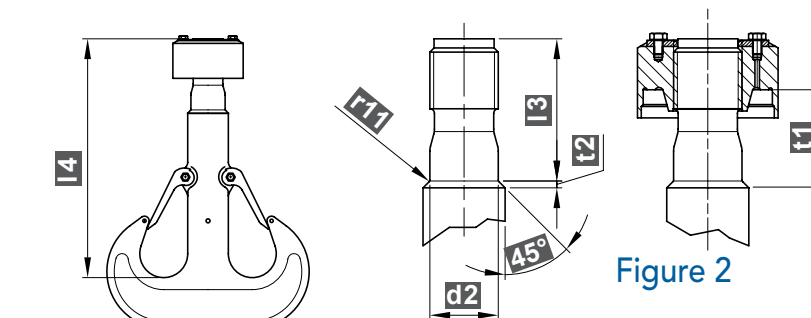


Figure 2



Applied norm DIN 15402 Part 2  
non destructive test 100%

Nut fixed with pin or safety plate.

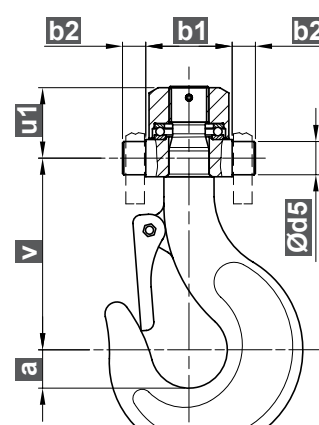
Code		Figure / Size		Dimensions							Suitable bearing	
Class P	Class V	1	2	d2 mm	l2 mm	l3 mm	l4 mm	t1 mm	t2 mm	r11 mm	Class P	Class V
535 402 PS	535 402 VS	2,5	-	36	83	-	244	50	-	3	51108	81108
535 404 PS	535 404 VS	4	-	42	93	-	274	56	-	3	51110	81110
535 406 PS	535 406 VS	-	6	50	-	112	365	79	4	3	51214	81214
535 408 PS	535 408 VS	-	8	56	-	122	406	85	4,5	3	51216	81216
535 410 PS	535 410 VS	-	10	64	-	135	435	95,5	5,5	3	51218	81218
535 412 PS	535 412 VS	-	12	72	-	157	492	110,5	6,5	3	51220	81220
535 416 PS	535 416 VS	-	16	80	-	170	562	120,5	7	3	51222	81222
535 420 PS	535 420 VS	-	20	90	-	187	628	128	8	3	51224	81224
535 425 PS	535 425 VS	-	25	100	-	207	696	144	10	3	51226	81226
535 432 PS	535 432 VS	-	32	110	-	232	768	159	11,5	3	51232	81232
535 440 PS	535 440 VS	-	40	125	-	257	863	177,5	13,5	3	51236	81236
535 450 PS	535 450 VS	-	50	140	-	280	944	201,5	15	5	51244	81244
535 463 PS	535 463 VS	-	63	160	-	322	1072	230	15	5	51248	81248
535 480 PS	535 480 VS	-	80	180	-	357	1212	251	16	5	51256	81256
535 498 PS	535 498 VS	-	100	200	-	402	1351	283	18	5	51260	81260

Lifting Components  
for OEM

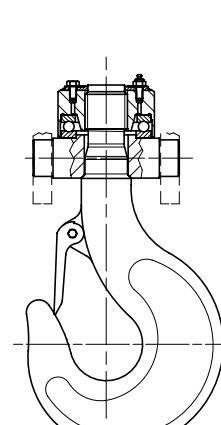


## 640 SERIES

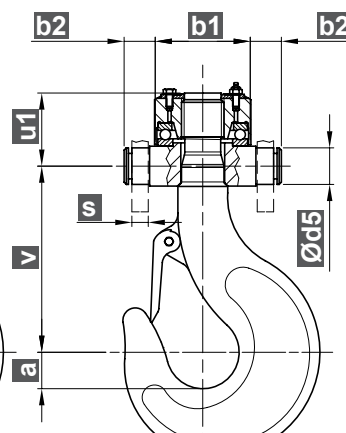
## SOSPENSION HOOK DIN 15411



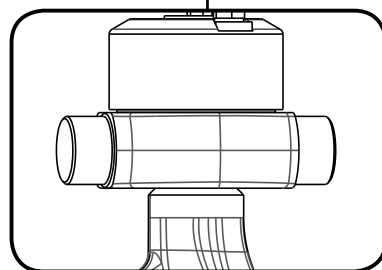
Form B (1)



Form B (2)



Form C (2)



Crosshead form B and C.  
Bigger sizes on request.



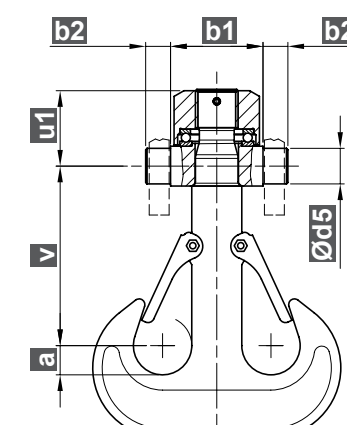
Code		Form / Figure /Size			Dimensions								Weight kg
Class P	Class V	B (1)	B (2)	C (2)	a mm	b1 mm	b2 mm	b3 mm	d5 mm	u1 mm	v mm	s mm	
640 301 PS	640 301 VS	1,6	-	-	28	65	17,5	-	25	53	140	-	5,30
640 302 PS	640 302 VS	2,5	-	-	31,5	80	20	-	30	63,5	155	-	8,60
640 304 PS	640 304 VS	4	-	-	35,5	90	22,5	-	35	71	175	-	13,00
640 305 PS	640 305 VS	5	-	-	40	100	25	-	40	79,5	195	-	18,50
640 306 PS	640 306 VS	-	6	-	45	125	27,5	-	45	90	240	-	27,00
640 308 PS	640 308 VS	-	8	-	50	140	30	-	50	98	265	-	43,00
640 310 PS	640 310 VS	-	10	-	56	160	30	-	55	110	280	-	55,00
640 312 PS	640 312 VS	-	12	-	62,5	180	35	-	60	127	315	-	82,00
640 316 PS	640 316 VS	-	16	-	70	190	35	-	70	136	370	-	103,5
640 420 PS	640 420 VS	-	-	20	80	200	40	47,5	80	150	415	30	143
640 425 PS	640 425 VS	-	-	25	90	220	45	49	90	166	460	30	195
640 432 PS	640 432 VS	-	-	32	100	260	50	59	100	188	500	40	292
640 440 PS	640 440 VS	-	-	40	112	285	60	65	110	208	565	45	400
640 450 PS	640 450 VS	-	-	50	125	335	60	65	125	224	620	45	600
640 463 PS	640 463 VS	-	-	63	112	380	-	71	140	260	700	50	855
640 480 PS	640 480 VS	-	-	80	125	420	-	72,5	160	287	800	50	1345
640 498 PS	640 498 VS	-	-	100	140	470	-	87,5	180	326	885	60	1855

Lifting Components  
for OEM

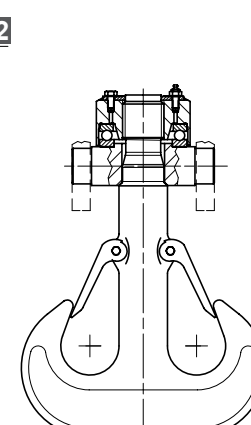


## 635 SERIES

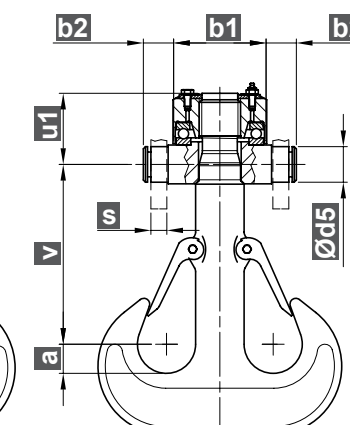
## SOSPENSION HOOK DIN 15411



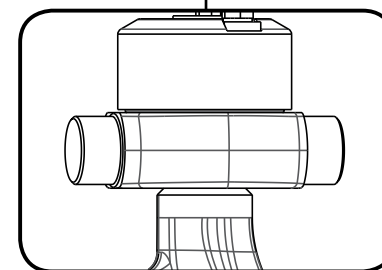
Form B (1)



Form B (2)



Form C (2)



Din products are supplied raw.  
Special protection coating on demand.

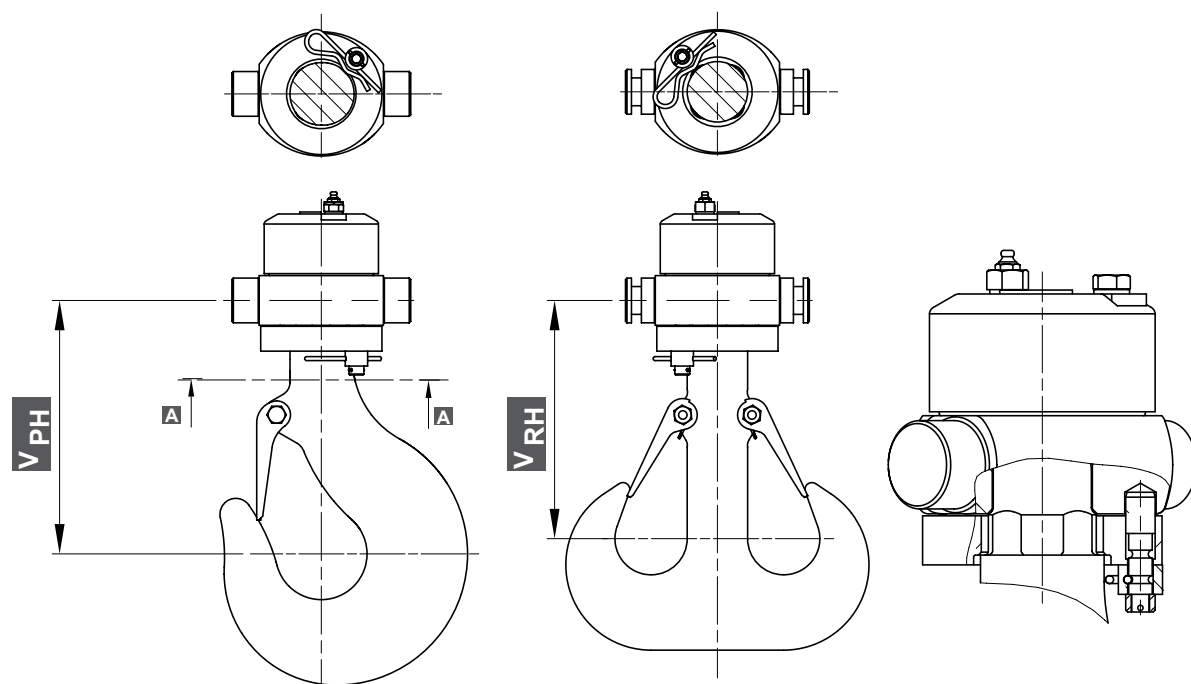


Code		Form / Figure /Size			Dimensions								Weight kg
Class P	Class V	B (1)	B (2)	C (2)	a mm	b1 mm	b2 mm	b3 mm	d5 mm	u1 mm	v mm	s mm	
635 302 PS	635 302 VS	2,5	-	-	25	80	20	-	30	63,5	155	-	9,20
635 304 PS	635 304 VS	4	-	-	28	90	22,5	-	35	71	175	-	14,30
635 306 PS	635 306 VS	-	6	-	35,5	125	27,5	-	45	90	240	-	26,30
635 308 PS	635 308 VS	-	8	-	40	140	30	-	50	98	265	-	41,00
635 310 PS	635 310 VS	-	10	-	45	160	30	-	55	110	280	-	60,00
635 312 PS	635 312 VS	-	12	-	50	180	35	-	60	127	315	-	89,00
635 316 PS	635 316 VS	-	16	-	56	190	35	-	70	136	370	-	98,00
635 420 PS	635 420 VS	-	-	20	62,5	200	-	47,5	80	150	415	30	166
635 425 PS	635 425 VS	-	-	25	70	220	-	49	90	166	460	30	174
635 432 PS	635 432 VS	-	-	32	80	260	-	59	100	188	500	40	259
635 440 PS	635 440 VS	-	-	40	90	285	-	65	110	208	565	45	370
635 450 PS	635 450 VS	-	-	50	100	335	-	65	125	224	620	45	568
635 463 PS	635 463 VS	-	-	63	112	380	-	71	140	260	700	50	830
635 480 PS	635 480 VS	-	-	80	125	420	-	72,5	160	287	800	50	1148
635 498 PS	635 498 VS	-	-	100	140	470	-	87,5	180	326	885	60	1642

Lifting Components  
for OEM

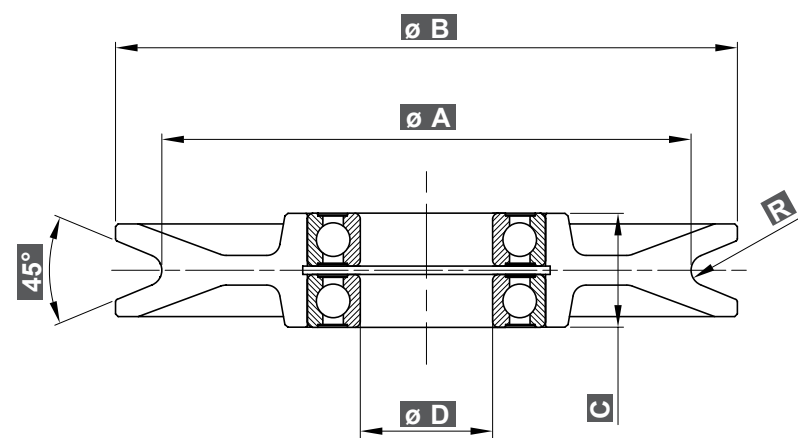


NEW



BRP series for heavy duty available.

Code				Size	Max applicable torque Nm	Dimensions	
Point Hook		Ramshorn Hook				Other dimensions see 635 and 640 series	
Class P	Class V	Class P	Class V			V <sub>PH</sub> mm	V <sub>RH</sub> mm
With crosshead form B With crosshead form C							
640 504 PS	640 504 VS	635 504 PS	635 504 VS	4	1000	220	200
640 604 PS	640 604 VS	635 604 PS	635 604 VS				
640 505 PS	640 505 VS	-	-	5	1000	230	-
640 605 PS	640 605 VS	-	-				
640 506 PS	640 506 VS	635 506 PS	635 506 VS	6	2500	250	240
640 606 PS	640 606 VS	635 606 PS	635 606 VS				
640 508 PS	640 508 VS	635 508 PS	635 508 VS	8	3000	270	265
640 608 PS	640 608 VS	635 608 PS	635 608 VS				
640 510 PS	640 510 VS	635 510 PS	635 510 VS	10	6500	280	280
640 610 PS	640 610 VS	635 610 PS	635 610 VS				
640 512 PS	640 512 VS	635 512 PS	635 512 VS	12	7500	315	315
640 612 PS	640 612 VS	635 612 PS	635 612 VS				
640 516 PS	640 516 VS	635 516 PS	635 516 VS	16	11000	370	370
640 616 PS	640 616 VS	635 616 PS	635 616 VS				
640 520 PS	640 520 VS	635 520 PS	635 520 VS	20	12000	415	415
640 620 PS	640 620 VS	635 620 PS	635 620 VS				
640 525 PS	640 525 VS	635 525 PS	635 525 VS	25	13000	460	460
640 625 PS	640 625 VS	635 625 PS	635 625 VS				
640 532 PS	640 532 VS	635 532 PS	635 532 VS	32	24500	500	500
640 632 PS	640 632 VS	635 632 PS	635 632 VS				
640 540 PS	640 540 VS	635 540 PS	635 540 VS	40	25000	565	565
640 640 PS	640 640 VS	635 640 PS	635 640 VS				
640 550 PS	640 550 VS	635 550 PS	635 550 VS	50	34000	620	620
640 650 PS	640 650 VS	635 650 PS	635 650 VS				



Forged sheaves, the ultimate resistance.  
 Delivered electrogalvanized.  
 Possibility for induction hardening of the throat and heavy duty bearings.  
 For special dimensions calendered sheaves or machined from solid on demand.

Size	Code	Rope mm	Max applicable force - t				Dimensions					Bearings	Weight kg
			M3	M4	M5	M6	R mm	A mm	B mm	C mm	D mm		
01	1SB 012 NC	6	2	1,6	1,25	1	3,7	133	150	32	25	6205-2RS	2,10
	1SB 014 NC	7,5					4,2	125					
02	1SB 022 NC	7	2,5	2	1,6	1,25	4,2	152	175	34	30	6206-2RS	2,40
	1SB 024 NC	8					5,3	150	178				
03	1SB 032 NC	8	3,2	2,5	2	1,6	4,8	172	200	36,5	35	6207-2RS	4,40
	1SB 034 NC	9					5,8	165					
04	1SB 042 NC	9	4	3,2	2,5	2	5,3	180	210	38,5	40	6208-2RS	5,30
	1SB 044 NC	10					6,3						
05	1SB 052 NC	10	5	4	3,2	2,5	6	200	235	43	50	6210-2RS	6,90
	1SB 054 NC	11					7	195					
06	1SB 062 NC	11	8	6,3	5	4	6,5	228	270	48	60	6212-2RS	11,50
	1SB 064 NC	12					7,5	225					
07	1SB 072 NC	12	8	6,3	5	4	7	257	297	48	60	6212-2RS	12,50
	1SB 074 NC	13					8	250					
08	1SB 082 NC	13	12,5	10	8	6,3	7,5	280	330	56	80	6216-2RS	16,50
	1SB 084 NC	14					8,5						
09	1SB 092 NC	14	12,5	10	8	6,3	8,5	320	375	56	80	6216-2RS	24,50
	1SB 094 NC	15					9,5	306	370				
10	1SB 102 NC	15	16	12,5	10	8	9,5	355	425	64	90	6218-2RS	35,00
	1SB 104 NC	16					10,5						
11	1SB 112 NC	17	20	16	12,5	10	10,5	400	470	72	100	6220-2RS	48,50
	1SB 114 NC	18					13						
12	1SB 122 NC	19	25	20	16	12,5	12	440	510	80	110	6222-2RS	59,00
	1SB 124 NC	20					14	430					
13	1SB 132 NC	22	-	-	20	16	13	500	570	85	120	6224-2Z	88,00
14	1SB 142 NC	24	-	-	25	20	14	550	630	85	130	6226-2Z	140