











A large industrial hook and pulley system, likely a crane component. The hook is painted red and has a large, curved shape with a central vertical shaft. The pulley system is painted yellow and consists of a large wheel with multiple grooves, mounted on a yellow frame. The background is split into red and blue sections.

One solution for every application.



**ELD standard Overhead Craneblocks
from one up to six sheaves, the practical idea.**



Technical informations			One	Two		Three		Four		Five	Six
Size	Rope	Load capacities t.	Hook								
	mm	M5	DIN 15401	1UB	1HB	1HA	1HE	1HF	1HG	1HL	1HM
02	7-8	1,6	1-V	1UB 022 02	-	-	-	-	-	-	-
		3,2	1,6-V	-	1HB 022 02	-	-	-	-	-	-
03	8-9	2	1-V	1UB 032 02	-	-	-	-	-	-	-
		4	2,5-T	-	1HB 032 03	-	-	-	-	-	-
04	9-10	2,5	1,6-V	1UB 042 04	-	-	-	-	-	-	-
		5	2,5-T	-	1HB 042 04	-	-	-	-	-	-
05	10-11	3,2	1,6-V	1UB 052 05	-	-	-	-	-	-	-
		6,3	4-T	-	1HA 052 05	-	-	-	-	-	-
		12,5	5-T	-	-	-	-	-	-	1HL 052 05	-
		4	2,5-T	1UB 062 06	-	-	-	-	-	-	-
06	11-12	8	4-T	-	-	1HA 062 06	-	-	-	-	-
		16	6-T	-	-	-	-	-	-	1HL 062 06	-
07	12-13	5	2,5-T	1UB 072 07	-	-	-	-	-	-	-
		10	5-T	-	1HB 072 07	1HA 072 07	-	-	-	-	-
		16	6-T	-	-	-	1HE 072 07	-	-	-	-
		20	8-T	-	-	-	-	1HG 072 07	1HL 072 07	-	-
08	13-14	6,3	4-T	1UB 082 08	-	-	-	-	-	-	-
		12,5	6-T	-	-	1HA 082 08	-	-	-	-	-
		20	8-T	-	-	-	1HE 082 08	1HF 082 08	-	-	-
		25	10-T	-	-	-	-	-	1HG 082 08	1HL 082 08	1HM 082 08
		32	12-T	-	-	-	-	-	-	-	1HP 082 08
		40	16-T	-	-	-	-	-	-	-	-
09	15-16	8	4-T	1UB 092 09	-	-	-	-	-	-	-
		16	8-T	-	-	1HA 092 09	-	-	-	-	-
		25	10-T	-	-	-	1HE 092 09	1HF 092 09	-	-	-
		32	12-T	-	-	-	-	-	1HG 092 09	1HL 092 09	1HM 092 09
10	17-18	40	16-T	-	-	-	-	-	-	-	1HP 092 09
		50	20-T	-	-	-	-	-	-	-	-
		20	10-T	-	-	1HA 102 10	-	-	-	-	-
		32	12-T	-	-	-	1HE 102 10	1HF 102 10	-	-	-
11	19-20	40	16-T	-	-	-	-	-	1HG 102 10	1HL 102 10	1HM 102 10
		50	20-T	-	-	-	-	-	-	-	1HP 102 10
		63	25-V	-	-	-	-	-	-	-	-
		25	12-T	-	-	1HA 112 11	-	-	-	-	-
		40	16-T	-	-	-	1HE 112 11	1HF 112 11	-	-	-
		50	20-T	-	-	-	-	-	1HG 112 11	1HL 112 11	1HM 112 11
12	20-22	63	25-V	-	-	-	-	-	-	-	1HP 112 11
		80	32-V	-	-	-	-	-	-	-	-
		50	20-T	-	-	-	1HE 122 12	-	-	-	-
		63	25-V	-	-	-	-	-	-	-	-

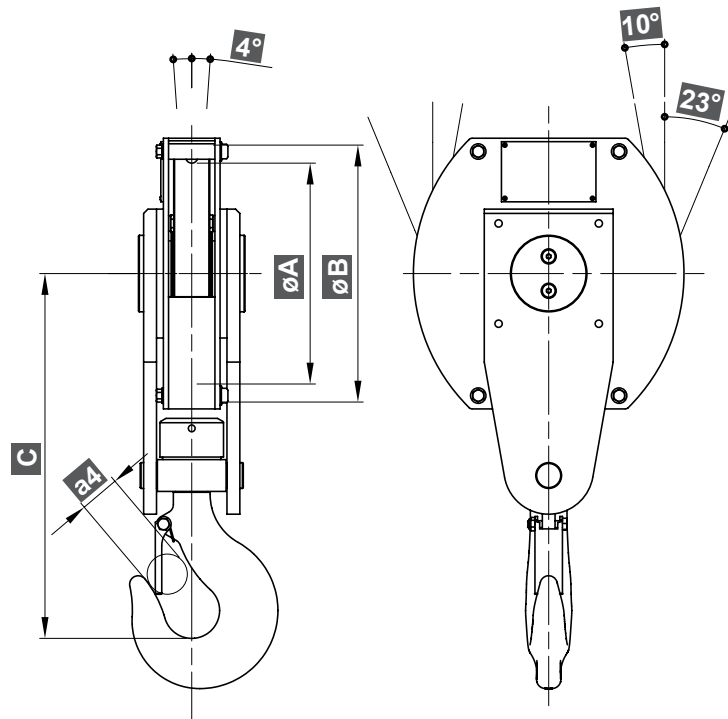


1UB SERIES

Overhead CRANEBLOCK
one sheave



BEST SELLER!



Meets F.E.M. 1.001

The overall design is made taking advantage of the ELD standard components achieving optimum results in terms of cost-control and delivery time.

Size	Point Hook DIN15401	Code	Rope mm	Load capacities t		Dimensions				Weight kg
				M5	M6	a4 mm	A mm	B mm	C mm	
02	1-V	1UB 022 02	7 8	1,6	1,25	35	152	175	305	11,30
03	1-V	1UB 032 03	8 9	2	1,6	35	172	200	317	15,00
04	1,6-V	1UB 042 04	9 10	2,5	2	38	180	210	348	18,00
05	1,6-V	1UB 052 05	10 11	3,2	2,5	38	200	235	359	22,50
06	2,5-T	1UB 062 06	11 12	4 (5)	3,2 (4)	43	228	270	424	43,00
07	2,5-T	1UB 072 07	12 13	5	4	43	257	297	424	46,00
08	4-T	1UB 082 08	13 14	6,3 (8)	5 (6,3)	48	280	330	491	67,00
09	4-T	1UB 092 09	15 16	8	6,3	48	320	375	491	76,00

Standard Bottom Block

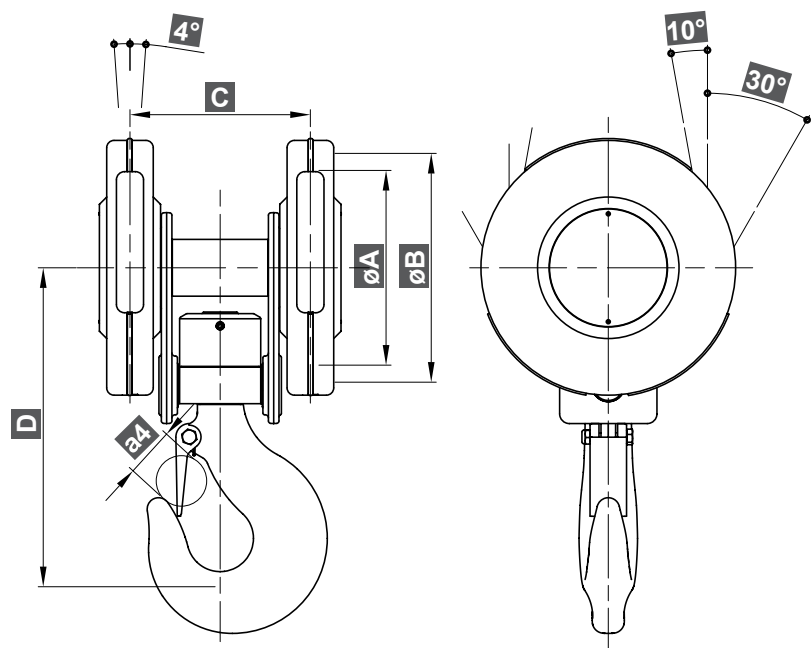


1HB SERIES

Overhead CRANEBLOCK
two sheaves



BEST SELLER!



Meets F.E.M. 1.001

Deep-drawn sheet metal cover, the lightest and simple solution.

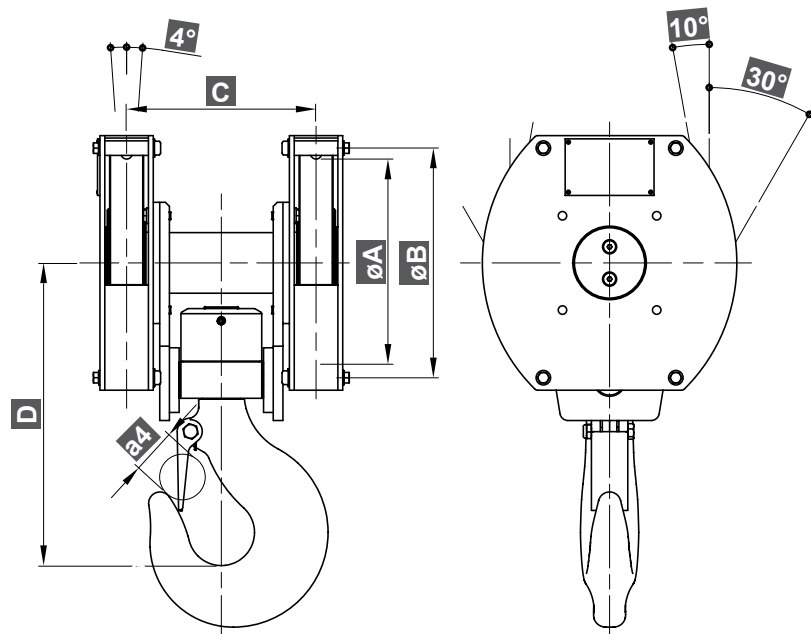
Size	Point Hook DIN15401	Code	Rope mm	Load capacities t		Dimensions					Weight kg
				M5	M6	a4 mm	A mm	B mm	C mm	D mm	
02	1,6-V	1HB 022 02	7 8	3,2	2,5	38	152	175	143	263	16,50
03	2,5-T	1HB 032 03	8 9	4	3,2	43	172	200	170	297	26,00
04	2,5-T	1HB 042 04	9 10	5	4	43	180	210	172	297	27,50
07	5-T	1HB 072 07	12 13	10	8	56	257	297	222	373	66,00

Standard Bottom Block



1HA SERIES

Overhead CRANEBLOCK
two sheaves



Meets F.E.M. 1.001

Delivered generally in thick metal sheet, and yellow painted.

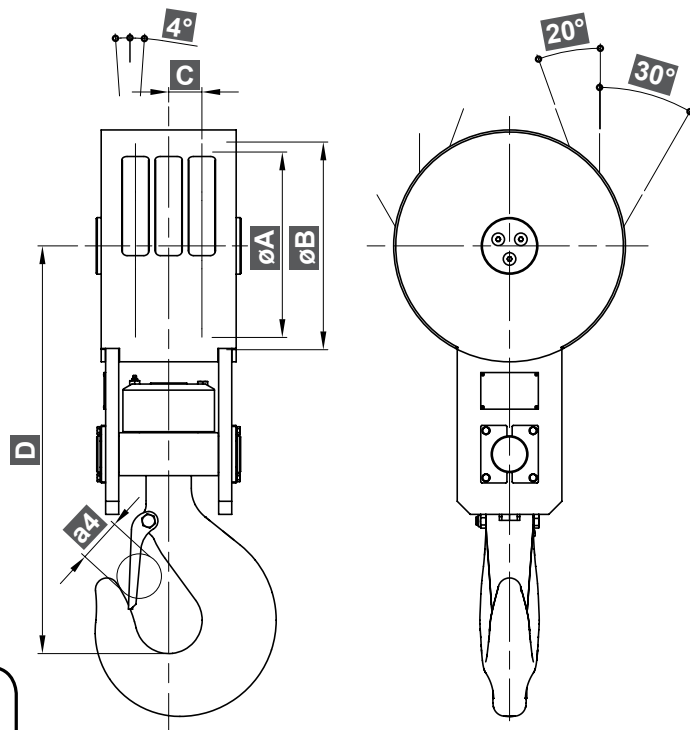
Size	Point Hook DIN15401	Code	Rope mm	Load capacities t		Dimensions					Weight kg
				M5	M6	a4 mm	A mm	B mm	C mm	D mm	
05	4-T	1HA 052 05	10 11	6,3	5	48	200	235	193	329	48,00
06	4-T	1HA 062 06	11 12	8	6,3	48	228	270	220	346	69,00
07	5-T	1HA 072 07	12 13	10	8	56	257	297	235	375	81,50
08	6-T	1HA 082 08	13 14	12,5	10	62	280	330	270	456	110
09	8-T	1HA 092 09	15 16	16	12,5	71	320	375	293	494	151
10	10-T	1HA 102 10	17 18	20	16	81	355	425	320	530	220
11	12-T	1HA 112 11	19 20	25	20	90	400	470	360	600	300

Standard Bottom Block



1HE SERIES

Overhead CRANEBLOCK
three sheaves



Meets F.E.M. 1.001

Ramshorn hook on demand.

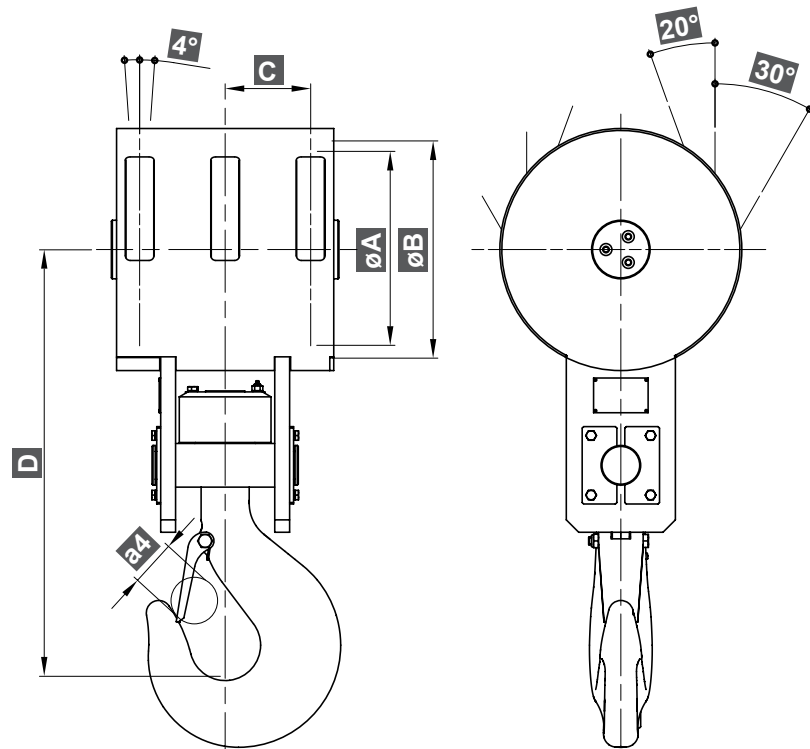
Size	Point Hook DIN15401	Code	Rope mm	Load capacities t		Dimensions					Weight kg
				M5	M6	a4 mm	A mm	B mm	C mm	D mm	
07	6-T	1HE 072 07	12 13	16	12,5	62	257	297	52	601	108
08	8-T	1HE 082 08	13 14	20	16	71	280	330	54	620	140
09	10-T	1HE 092 09	15 16	25	20	81	320	375	60	700	200
10	12-T	1HE 102 10	17 18	32	25	90	355	425	65	770	280
11	16-T	1HE 112 11	19 20	40	32	100	400	470	70	850	360
12	20-T	1HE 122 12	20 22	50	40	110	440	510	74	958	480

Standard Bottom Block



1HF SERIES

Overhead CRANEBLOCK
three sheaves



Meets F.E.M. 1.001

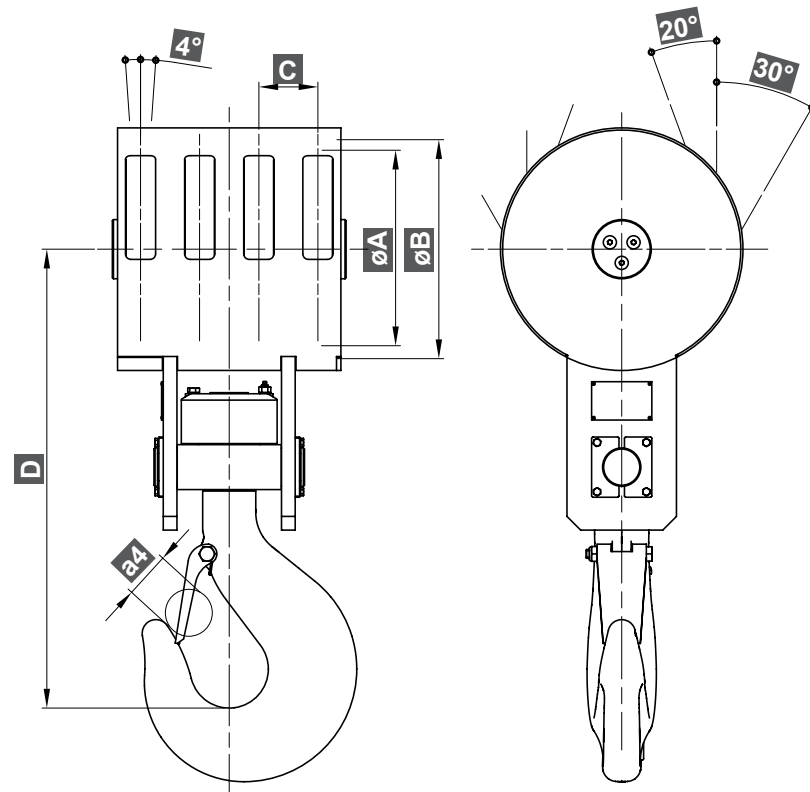
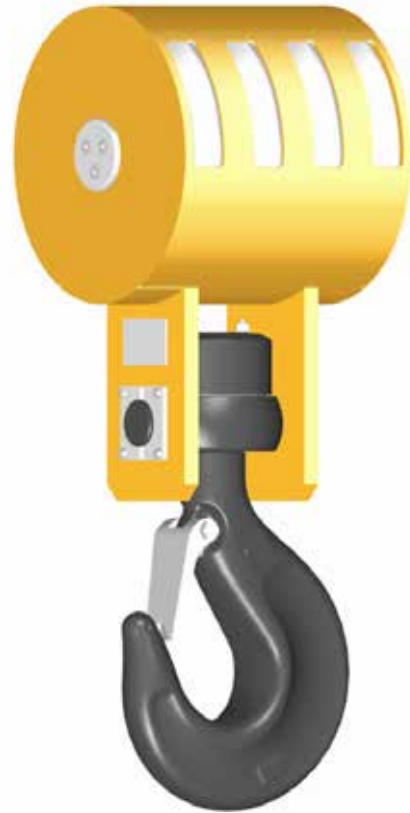
Size	Point Hook DIN15401	Code	Rope mm	Load capacities t		Dimensions					Weight kg
				M5	M6	a4 mm	A mm	B mm	C mm	D mm	
08	8-T	1HF 082 08	13 14	20	16	71	280	330	135	620	150
09	10-T	1HF 092 09	15 16	25	20	81	320	375	155	700	215
10	12-T	1HF 102 10	17 18	32	25	90	355	425	162	770	300
11	16-T	1HF 112 11	19 20	40	32	100	400	470	173	850	390

Standard Bottom Block



1HG SERIES

Overhead CRANEBLOCK
four sheaves



Meets F.E.M. 1.001

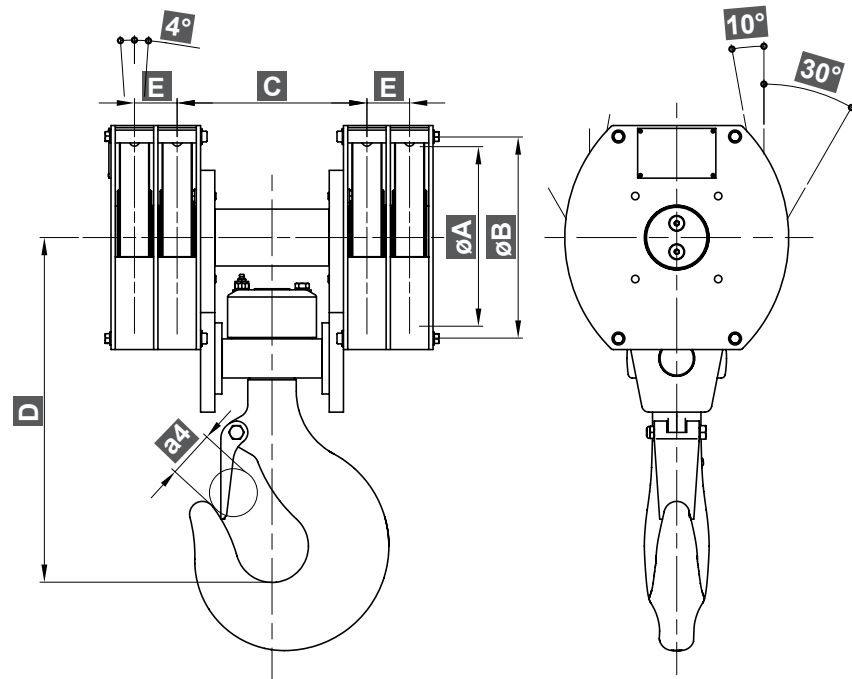
Size	Point Hook DIN15401	Code	Rope mm	Load capacities t		Dimensions					Weight kg
				M5	M6	a4 mm	A mm	B mm	C mm	D mm	
07	8-T	1HG 072 07	12 13	20	16	71	257	297	85	623	150
08	10-T	1HG 082 08	13 14	25	20	81	280	330	90	640	180
09	12-T	1HG 092 09	15 16	32	25	90	320	375	103	750	260
10	16-T	1HG 102 10	17 18	40	32	100	355	425	108	850	355
11	20-T	1HG 112 11	19 20	50	40	110	400	470	115	915	450
12	25-V	1HG 122 12	20 22	63	50	125	440	510	120	1022	550

Standard Bottom Block



1HL SERIES

Overhead CRANEBLOCK four sheaves



Meets F.E.M. 1.001

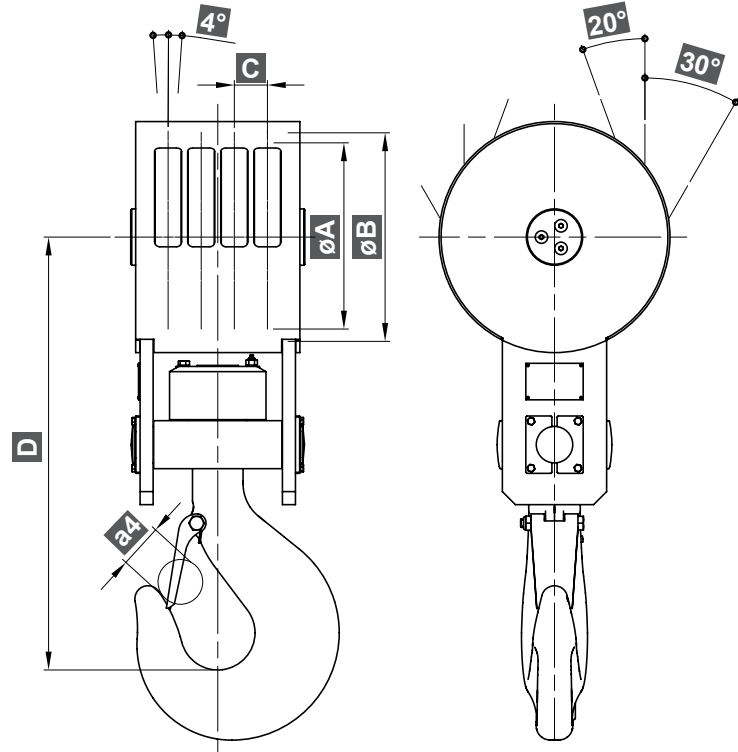
Size	Point Hook DIN15401	Code	Rope mm	Load capacities t		Dimensions						Weight kg
				M5	M6	a4 mm	A mm	B mm	C mm	D mm	E mm	
05	5-T	1HL 052 05	10 11	12,5	10	56	200	235	200	380	50	75,00
06	6-T	1HL 062 06	11 12	16	12,5	62	228	270	232	457	60	122
07	8-T	1HL 072 07	12 13	20	16	71	257	297	267	484	60	150
08	10-T	1HL 082 08	13 14	25	20	81	280	330	289	520	62	195
09	12-T	1HL 092 09	15 16	32	25	90	320	375	320	590	62	262
10	16-T	1HL 102 10	17 18	40	32	100	355	425	358	670	90	380
11	20-T	1HL 112 11	19 20	50	40	110	400	470	391	750	90	500

Standard Bottom Block



1HM SERIES

Overhead CRANEBLOCK four sheaves



Meets F.E.M. 1.001

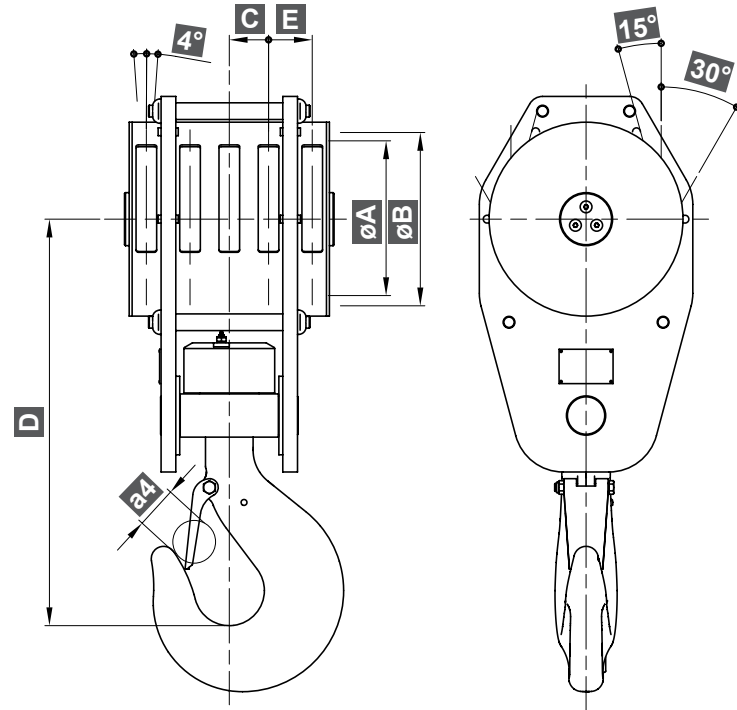
Size	Point Hook DIN15401	Code	Rope mm	Load capacities t		Dimensions					Weight kg
				M5	M6	a4 mm	A mm	B mm	C mm	D mm	
08	10-T	1HM 082 08	13	25	20	81	280	330	54	640	185
			14								
09	12-T	1HM 092 09	15	32	25	90	320	375	60	750	255
			16								
10	16-T	1HM 102 10	17	40	32	100	355	425	65	850	330
			18								
11	20-T	1HM 112 11	19	50	40	110	400	470	70	915	470
			20								

Standard Bottom Block



1HP SERIES

Overhead CRANEBLOCK
five sheaves



Meets F.E.M. 1.001

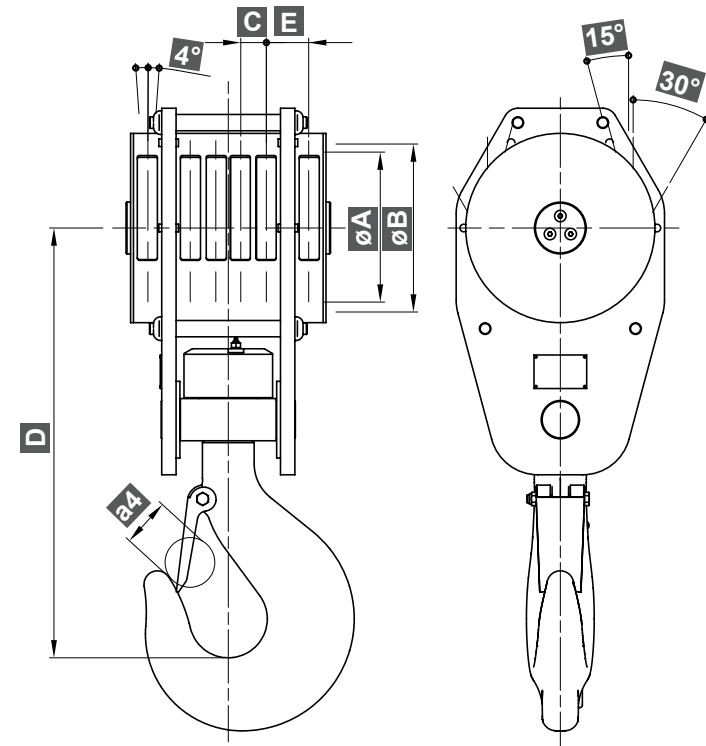
Size	Point Hook DIN15401	Code	Rope mm	Load capacities t		Dimensions						Weight kg
				M5	M6	a4 mm	A mm	B mm	C mm	D mm	E mm	
08	12-T	1HP 082 08	13	32	25	90	280	330	80	741	80	250
			14									
09	16-T	1HP 092 09	15	40	32	100	320	375	80	831	89	390
			16									
10	20-T	1HP 102 10	17	50	40	110	355	425	87	925	98	510
			18									
11	25-V	1HP 112 11	19	63	50	125	400	470	93	1056	115	625
			20									

Standard Bottom Block



1HR SERIES

Overhead CRANEBLOCK
six sheaves



Meets F.E.M. 1.001

Available upon request other dimensions and configurations.
Special application that exceed the normal use shall be developed by
communicating every detail to ELD's technical department.

Size	Point Hook DIN15401	Code	Rope mm	Load capacities t		Dimensions						Weight kg
				M5	M6	a4 mm	A mm	B mm	C mm	D mm	E mm	
08	16-T	1HR 082 08	13	40	32	100	280	330	53	805	80	270
			14									
09	20-T	1HR 092 09	15	50	40	110	320	375	54	895	89	430
			16									
10	25-V	1HR 102 10	17	63	50	125	355	425	58	988	98	550
			18									
11	32-V	1HR 112 11	19	80	63	145	400	470	62	1103	115	690
			20									

Standard Bottom Block